



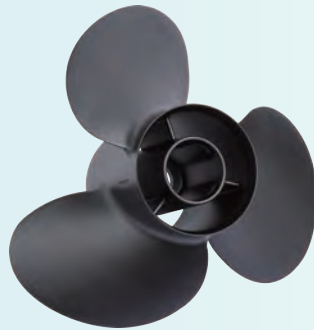
### RUBEX 3

- \* Exclusive squeeze cast process
- \* Stronger blades with better performance
- \* Outstanding acceleration and top speed



### RUBEX 4

- \* Exclusive squeeze cast process
- \* Stronger blades with better performance
- \* Great Acceleration and Midrange performance
- \* Great stern lift & handling



### RUBEX 3 High Thrust

- \* Ideal for heavy applications & pontoon boats.
- \* Excellent Forward and Reverse Thrust



### RUBEX 3 Plus

- \* Exclusive squeeze cast process
- \* Stronger blades with better performance
- \* Outstanding acceleration and top speed
- \* Larger diameter for the Suzuki DF70-140, 15 tooth



### iPOP

- \* Exclusive squeeze cast process
- \* High Performance Double Cupped Blades
- \* Improved acceleration and top speed
- \* Better holding power and fuel economy

**6 ~ 20 Horsepower**  
(Thru Hub Exhaust)  
2-1/2" Gearcase

**A**

Aluminum 3 blade				
<b>RUBEX 3</b> RBX Rubber Hub				
B	D	P	R	PART NO.
3	9.25	7	R	9111-093-07
3	9.25	8	R	9111-093-08
3	9.25	9	R	9111-093-09
3	9.25	10	R	9111-093-10
3	9.25	11	R	9111-093-11
3	9.25	12	R	9111-093-12

**9.9 ~ 35 Horsepower**  
(Thru Hub Exhaust)  
3" Gearcase

**B**

Aluminum 3 blade				
<b>RUBEX 3</b> RBX Rubber Hub <b>B1</b>				
B	D	P	R	PART NO.
3	11	9	R	9211-110-09
3	10.8	10	R	9211-108-10
3	10.5	11	R	9211-105-11
3	10.3	12	R	9211-103-12
3	10.1	13	R	9211-101-13
3	10	14	R	9211-100-14
3	10	15	R	9211-100-15

Aluminum 3 blade				
<b>RUBEX 3</b> RBX Rubber Hub <b>B2</b>				
B	D	P	R	PART NO.
3	9.9	9	R	9211-099-09
3	9.9	10	R	9211-099-10
3	9.9	11	R	9211-099-11
3	9.9	12	R	9211-099-12
3	9.9	13	R	9211-099-13
3	9.9	14	R	9211-099-14

Aluminum 3 blade				
<b>RUBEX 3</b> RBX Rubber Hub <b>B3</b>				
B	D	P	R	PART NO.
3	11	9	R	9211-110-09SB
3	10.8	10	R	9211-108-10SB
3	10.5	11	R	9211-105-11SB
3	10.3	12	R	9211-103-12SB
3	10.1	13	R	9211-101-13SB
3	10	14	R	9211-100-14SB
3	10	15	R	9211-100-15SB

**25 ~ 75 Horsepower**  
(Thru Hub Exhaust)  
3-1/4" Gearcase

**C**

Aluminum 3 blade				
<b>RUBEX 3</b> RBX Rubber Hub				
B	D	P	R	PART NO.
3	12.1	9	R	9311-121-09
3	12	10	R	9311-120-10
3	11.6	11	R	9311-116-11
3	11.4	12	R	9311-114-12
3	11.1	13	R	9311-111-13
3	11.1	14	R	9311-111-14
3	11	15	R	9311-110-15

**40 ~ 140 Horsepower**  
(Thru Hub Exhaust)  
4-1/4" Gearcase

**D**

Aluminum 3 blade				
<b>RUBEX 3</b> RBX Rubber Hub				
B	D	P	R	PART NO.
3	14	9	R	9411-140-09
3	14	11	R	9411-140-11
3	13.75	13	R	9411-138-13
3	13.5	14	R	9411-135-14
3	13.5	15	R	9411-135-15
3	13.5	16	R	9411-135-16
3	13.25	17	R	9411-133-17
3	13.25	18	R	9411-133-18
3	13.2	19	R	9411-132-19
3	13.2	21	R	9411-132-21

Aluminum 3 blade				
<b>RUBEX 3 Plus</b> RBX Rubber Hub				
B	D	P	R	PART NO.
3	13.875	17	R	9411-139-17
3	13.875	19	R	9411-139-19
3	13.875	21	R	9411-139-21

**Recommended for**  
**Suzuki DF 70~ DF 140**  
**(4 Stroke, 15 Tooth Spline)**

Aluminum 4 blade				
<b>RUBEX 4</b> RBX Rubber Hub				
B	D	P	R	PART NO.
4	13.25	13	R	9413-133-13
4	13	15	R	9413-130-15
4	12.75	17	R	9413-128-17
4	12.5	19	R	9413-125-19

Aluminum 3 blade <b>High Thrust</b>				
<b>RUBEX 3</b> RBX Rubber Hub				
B	D	P	R	PART NO.
3	14.1	11	R	9411-141-11

**Notice:**

1. Engine manufacturer recommends greasing the propeller shaft every 12 months.
2. Make sure all propeller hardware is installed correctly.



**Important :**  
RBX Hub Kits  
are required  
for installation.

( Hub Kit Not Included )  
RBX Patent No : U.S 7,488,225

**115 and up Horsepower**  
(Thru Hub Exhaust)  
4-3/4" Gearcase

**E**

Aluminum 3 blade				
<b>RUBEX 3</b> RBX Rubber Hub				
B	D	P	R	PART NO.
3	15.5	11	R	9511-155-11
3	15.3	13	R	9511-153-13
3	15	15	R	9511-150-15
3	15	15	L	9512-150-15
3	14.8	17	R	9511-148-17
3	14.8	17	L	9512-148-17
3	14.5	19	R	9511-145-19
3	14.5	19	L	9512-145-19
3	14.3	21	R	9511-143-21
3	14.3	21	L	9512-143-21
3	14.2	23	R	9511-142-23
3	14.2	23	L	9512-142-23

Aluminum 3 blade				
<b>RUBEX 3 Plus</b> RBX Rubber Hub				
B	D	P	R	PART NO.
3	16	13	R	9511-160-13
3	15.8	15	R	9511-158-15
3	15.8	15	L	9512-158-15
3	15.5	17	R	9511-155-17
3	15.5	17	L	9512-155-17
3	15.3	19	R	9511-153-19
3	15.3	19	L	9512-153-19
3	15.3	21	R	9511-153-21
3	15.3	21	L	9512-153-21
3	15.3	23	R	9511-153-23

Aluminum 3 blade <b>(DOUBLE CUP)</b>				
<b>RUBEX 3 Plus</b> RBX Rubber Hub				
B	D	P	R	PART NO.
3	15.5	11	R	9501-155-11DC
3	15.5	13	R	9501-155-13DC
3	15	15	R	9501-150-15DC
3	14.8	17	R	9501-148-17DC

Aluminum 3 blade				
<b>iPOP</b> RBX Rubber Hub				
B	D	P	R	PART NO.
3	14.8	18	R	9501-148-18
3	14.5	20	R	9501-145-20
3	14.3	22	R	9501-143-22

Aluminum 4 blade				
<b>RUBEX 4</b> RBX Rubber Hub				
B	D	P	R	PART NO.
4	14.75	15	R	9513-148-15
4	14.75	15	L	9514-148-15
4	14.5	17	R	9513-145-17
4	14.5	17	L	9514-145-17
4	14.25	19	R	9513-143-19
4	14.25	19	L	9514-143-19
4	14	21	R	9513-140-21
4	14	21	L	9514-140-21



# RUBEX™ DOUBLE CUP PONTOON PROPELLER



- **Additional cupping to grip the water**
- **Prevents cavitation**
- **Prevents blowouts**
- **Reduces slip**

RUBEX 3 Plus (DOUBLE CUP)				
B	D	P	R	PART NO.
3	15.5	11	R	9501-155-11DC
3	15.5	13	R	9501-155-13DC
3	15	15	R	9501-150-15DC
3	14.8	17	R	9501-148-17DC

 **SOLAS®**  
*Where Speed Begins*

## PRO SERIES

# SAV

Solas Adjust Vent



High Precision Blade  
for  
High Performance



### PRO L3

1. More aggressive camber design & cupping
2. Longer barrel

### PRO L4

3. Equipped with SAV (Solas Adjustable Vent)
4. Mainly for bigger horsepower 200hp and up



### RUBEX S3

- \* High performance for bass & bay boats
- \* Equipped with SAV (Solas Adjustable Vent)
- \* High rake design for increased bow lift
- \* Extra cupping suitable for high engine mounting
- \* Cut down blade reduces drag



### HYDRQ

- \* Smaller blade area to increase rpms & speed
- \* Great Top Speed



### RUBEX C4

- \* All-around performance
- \* Great Acceleration and Midrange performance
- \* Great stern lift & acceleration



### **RUBEX HR3**

- \* Performance prop for high speed planing hulls
- \* High rake blade design provides excellent bow lift
- \* Excellent acceleration and top speed
- \* Cupped blade design increases bite & reduces slip



### **RUBEX HR4**

- \* Great stern lift & acceleration
- \* High rake and cupped blade design
- \* Powerful thrust & very smooth performance
- \* Increased speed & economy in the mid-range



### **RUBEX L3**

- \* Large diameter & blade area for big boats
- \* Great high speed and midrange performance
- \* Excellent fuel economy for offshore boats



### **RUBEX NS3**

- \* All-around performance
- \* Good acceleration
- \* Large ear blade design



### **RUBEX L4**

- \* Bravo I propeller replacement
- \* High rake and cupped blade design
- \* Great stern lift & acceleration
- \* Excellent top speed & very smooth performance



### **RUBEX L3 Plus**

- \* Large diameter & blade area for big boats
- \* Larger Diameter than L3
- \* Great high speed and mid range performance
- \* Excellent fuel economy for offshore boats



## C 25~ 75 Horsepower ( Thru Hub Exhaust ) 3-1/4" Gearcase

Stainless steel 3 blade				
<b>RUBEX NS3</b> RBX Rubber Hub				
B	D	P	R	PART NO.
3	11 5/8	11	R	9331-116-11
3	11 3/8	12	R	9331-114-12
3	11 1/8	13	R	9331-111-13
3	11 1/8	14	R	9331-111-14
3	11	15	R	9331-110-15

Stainless steel 4 blade				
<b>RUBEX C4</b> RBX Rubber Hub				
B	D	P	R	PART NO.
4	11 1/2	12	R	9333-115-12
4	11 1/2	13	R	9333-115-13
4	11 1/2	14	R	9333-115-14

## D 40~ 140 Horsepower ( Thru Hub Exhaust ) 4-1/4" Gearcase

Stainless steel 3 blade				
<b>HYDRQ</b> RBX Rubber Hub <span style="float: right;">NEW !</span>				
B	D	P	R	PART NO.
3	13 1/8	14	R	9481-131-14
3	13 1/8	16	R	9481-131-16
3	13 1/8	18	R	9481-131-18
3	13 1/8	20	R	9481-131-20
3	13 1/8	22	R	9481-131-22

Stainless steel 3 blade				
<b>RUBEX NS3</b> RBX Rubber Hub				
B	D	P	R	PART NO.
3	13 3/4	13	R	9431-138-13
3	13 3/4	13	L	9432-138-13
3	13 1/2	15	R	9431-135-15
3	13 1/2	15	L	9432-135-15
3	13 1/4	17	R	9431-133-17
3	13 1/4	17	L	9432-133-17
3	13	19	R	9431-130-19
3	13	19	L	9432-130-19
3	13	21	R	9431-130-21

Stainless steel 4 blade				
<b>RUBEX HR4</b> RBX Rubber Hub				
B	D	P	R	PART NO.
4	13 1/2	13	R	9453-135-13
4	13 1/2	13	L	9454-135-13
4	13 1/4	15	R	9453-133-15
4	13 1/4	15	L	9454-133-15
4	13 1/4	16	R	9453-133-16
4	13	17	R	9453-130-17
4	13	17	L	9454-130-17
4	13	19	R	9453-130-19
4	13	19	L	9454-130-19
4	13	21	R	9453-130-21
4	13	21	L	9454-130-21

## D+ ( Thru Hub Exhaust ) 4-1/4" Gearcase

Stainless steel 3 blade				
<b>RUBEX HR3</b> RBX Rubber Hub				
B	D	P	R	PART NO.
3	13.9	15	R	9451-139-15
3	13.9	15	L	9452-139-15
3	13.9	17	R	9451-139-17
3	13.9	17	L	9452-139-17
3	13.9	19	R	9451-139-19
3	13.9	19	L	9452-139-19
3	13.9	21	R	9451-139-21
3	13.9	21	L	9452-139-21
3	13.9	23	R	9451-139-23
3	13.9	23	L	9452-139-23
3	13.9	25	R	9451-139-25



**Important :**

**RBX Hub Kits are required for installation.**

( Hub Kit Not Included )  
RBX Patent No : U.S 7,488,225

**⊖ Notice:**

1. Engine manufacturer recommends greasing the propeller shaft every 12 months.
2. Make sure all propeller hardware is installed correctly.



**E 115 and up Horsepower ( Thru Hub Exhaust ) 4-3/4" Gearcase**

**Stainless steel 3 blade**  
**RUBEX L3** RBX Rubber Hub

B	D	P	R	PART NO.
3	15 3/4	15	R	9571-158-15
3	15 3/4	15	L	9572-158-15
3	15 5/8	16	R	9571-156-16
3	15 5/8	16	L	9572-156-16
3	15 1/2	17	R	9571-155-17
3	15 1/2	17	L	9572-155-17
3	15 3/8	18	R	9571-154-18
3	15 3/8	18	L	9572-154-18
3	15 1/4	19	R	9571-153-19
3	15 1/4	19	L	9572-153-19
3	15 1/8	20	R	9571-151-20
3	15 1/8	20	L	9572-151-20
3	15	21	R	9571-150-21
3	15	21	L	9572-150-21
3	14 7/8	22	R	9571-149-22
3	14 7/8	22	L	9572-149-22
3	14 3/4	23	R	9571-148-23
3	14 3/4	23	L	9572-148-23
3	14 1/2	25	R	9571-145-25
3	14 1/2	25	L	9572-145-25
3	14 1/2	27	R	9571-145-27
3	14 1/2	27	L	9572-145-27

**Stainless steel 3 blade**  
**RUBEX HR3** RBX Rubber Hub

B	D	P	R	PART NO.
3	15	14	R	9551-150-14
3	15	14	L	9552-150-14
3	14 3/4	16	R	9551-148-16
3	14 3/4	16	L	9552-148-16
3	14 3/4	17	R	9551-148-17
3	14 3/4	17	L	9552-148-17
3	14 3/4	18	R	9551-148-18
3	14 3/4	18	L	9552-148-18
3	14 3/4	19	R	9551-148-19
3	14 3/4	19	L	9552-148-19
3	14 3/4	20	R	9551-148-20
3	14 3/4	20	L	9552-148-20
3	14 1/2	21	R	9551-145-21
3	14 1/2	21	L	9552-145-21
3	14 1/4	22	R	9551-143-22
3	14 1/4	22	L	9552-143-22
3	14	24	R	9551-140-24
3	14	24	L	9552-140-24

**Stainless steel 3 blade**  
**HYDRG** RBX Rubber Hub

B	D	P	R	PART NO.
3	14 1/2	15	R	9581-145-15
3	14 1/2	15	L	9582-145-15
3	14 1/4	17	R	9581-143-17
3	14 1/4	17	L	9582-143-17
3	13 7/8	19	R	9581-139-19
3	13 7/8	19	L	9582-139-19
3	13 3/4	21	R	9581-138-21
3	13 3/4	21	L	9582-138-21

**Stainless steel 3 blade SAV System**  
**RUBEX S3** RBX Rubber Hub

B	D	P	R	PART NO.
3	15 1/8	21	R	9561-151-21
3	15 1/8	22	R	9561-151-22
3	15 1/8	23	R	9561-151-23
3	15 1/8	24	R	9561-151-24
3	15 1/8	25	R	9561-151-25
3	15 1/8	26	R	9561-151-26
3	15 1/8	27	R	9561-151-27
3	15 1/8	28	R	9561-151-28

**Stainless steel 3 blade SAV System**  
**Lab finished**  
**PRO L3** RBX Rubber Hub

B	D	P	R	PART NO.
3	15 1/4	19	R	9575-153-19
3	15 1/4	19	L	9576-153-19
3	15	21	R	9575-150-21
3	15	21	L	9576-150-21
3	14 3/4	23	R	9575-148-23
3	14 3/4	23	L	9576-148-23
3	14 1/2	25	R	9575-145-25
3	14 1/2	25	L	9576-145-25

**Stainless steel 3 blade**  
**RUBEX L3 Plus** RBX Rubber Hub

B	D	P	R	PART NO.
3	16	13	R	* 9571-160-13
3	16	13	L	* 9572-160-13
3	16	15	R	9571-160-15
3	16	15	L	9572-160-15
3	16	17	R	9571-160-17
3	16	17	L	9572-160-17
3	16	19	R	9571-160-19
3	16	19	L	9572-160-19
3	15 3/4	21	R	9571-158-21
3	15 3/4	21	L	9572-158-21
3	15 5/8	23	R	9571-156-23
3	15 5/8	23	L	9572-156-23

**Stainless steel 4 blade**  
**RUBEX HR4** RBX Rubber Hub

B	D	P	R	PART NO.
4	14 1/2	14	R	9553-145-14
4	14 1/2	15	R	9553-145-15
4	14 1/2	15	L	9554-145-15
4	14 1/2	16	R	9553-145-16
4	14 1/4	17	R	9553-143-17
4	14 1/4	17	L	9554-143-17
4	14 1/8	18	R	9553-141-18
4	14 1/8	18	L	9554-141-18
4	14 1/8	19	R	9553-141-19
4	14 1/8	19	L	9554-141-19
4	14	20	R	9553-140-20
4	14	20	L	9554-140-20
4	14	21	R	9553-140-21
4	14	21	L	9554-140-21
4	14	23	R	9553-140-23
4	14	23	L	9554-140-23
4	14	25	R	9553-140-25
4	14	25	L	9554-140-25

**Stainless steel 4 blade SAV System**  
**Lab finished**  
**PRO L4** RBX Rubber Hub

B	D	P	R	PART NO.
4	15	18	R	9577-150-18
4	15	18	L	9578-150-18
4	15	20	R	9577-150-20
4	15	20	L	9578-150-20
4	15	22	R	9577-150-22
4	15	22	L	9578-150-22
4	15	24	R	9577-150-24
4	15	24	L	9578-150-24
4	15	26	R	9577-150-26
4	15	26	L	9578-150-26
4	15	28	R	9577-150-28
4	15	28	L	9578-150-28

**Stainless steel 3 blade**  
**RUBEX NS3** RBX Rubber Hub

B	D	P	R	PART NO.
3	14 1/2	15	R	9531-145-15
3	14 1/2	15	L	9532-145-15
3	14 1/4	17	R	9531-143-17
3	14 1/4	17	L	9532-143-17
3	14	19	R	9531-140-19
3	14	19	L	9532-140-19
3	14	21	R	9531-140-21
3	14	21	L	9532-140-21
3	14	23	R	9531-140-23
3	14	23	L	9532-140-23

**Stainless steel 4 blade**  
**RUBEX L4** RBX Rubber Hub

B	D	P	R	PART NO.
4	15 1/4	18	R	9573-153-18
4	15 1/4	18	L	9574-153-18
4	15 1/4	20	R	9573-153-20
4	15 1/4	20	L	9574-153-20
4	15 1/4	22	R	9573-153-22
4	15 1/4	22	L	9574-153-22
4	15 1/4	24	R	9573-153-24
4	15 1/4	24	L	9574-153-24
4	15 1/4	26	R	9573-153-26
4	15 1/4	26	L	9574-153-26
4	15 1/4	28	R	9573-153-28

**Stainless steel 3 blade**  
**RUBEX NS3 Plus** RBX Rubber Hub

B	D	P	R	PART NO.
3	15 5/8	11	R	9531-156-11
3	15 5/8	13	R	9531-156-13
3	15 5/8	13	L	9532-156-13



RBX Patent No : U.S 7,488,225

# Hub Kits for RUBEX

## • RUBEX HUB KIT APPLICATION CHART •

RUBEX HUB KIT APPLICATION CHART		ALUMINUM HUB		BRONZE HUB		
<b>Mercury / Mariner / Mercruiser</b>		Hub Kit #	Hub #	Hub Kit #	Hub #	Prop Category
6,8,9.9 HP (2-Stroke) 86 & Newer, 10 HP 95 & Newer, 15 HP (2 & 4-Stroke) 89-06, 8, 9.9 HP (4-Stroke Not Big Foot) 02-04, 10, 15 HP (Sea Pro/Marathon) 95-01, (FORCE) 9.9 & 15 HP 96-98; 2-1/2" Gearcase (8 Tooth Spline)		N/A	N/A	RBX-A10	N/A	A
9.9 HP Bigfoot 4 Stroke 2005 & Newer, 15, 20 HP 4 Stroke 2007 & Newer, Japan Origin (Tohatsu) 2-1/2" Gearcase (14 Tooth Spline)		N/A	N/A	RBX-A50	N/A	A
9.9 & 15 HP (4-Stroke Big Foot/Sail) 99-2005, 18 HP (Mercury) 80-85, 20 HP (2-Stroke Mercury) 86-02, 20 HP (Mariner 2-stroke) 85 & Newer, 25 HP (Mariner 2-Stroke) 85 & Newer, 25 HP (2-Stroke Mercury) 80-05, 25 HP (Sea Pro/Marathon) All Years, (FORCE) 25 HP 3Cyl 95-98; (10 Tooth Spline) 3" Gearcase		N/A	N/A	RBX-B10	N/A	B1
25 HP 80-84, 28 HP 76-79, 30 HP 79-90; (10 Tooth Spline) (Japan Origin Yamaha) 3" Gearcase		N/A	N/A	RBX-B30	N/A	B2
25 HP 4-Stroke (Not Bigfoot) 06 & Newer, 30 HP 4-Stroke (Not Bigfoot) 06 & Newer; (Japan Origin Tohatsu) (10 Tooth Spline) 3" Gearcase		N/A	N/A	RBX-B50	N/A	B2
25 HP Bigfoot 1999-05, 30 HP Bigfoot 2010 and Newer, 30HP (2 & 4-Stroke) 1994-05, 30 HP (Sea Pro/Marathon) 1994 & Newer, 35 HP 1984-89, 402 & 500 Models 1974-84, 40 - 50 HP (2 & 4-Stroke, Not Bigfoot) 1997 & Newer, 45 HP 1986-1989, 48 HP (Mariner) All Years, 55 HP (Sea Pro/Marathon) 1995 & Newer, 60 HP (Mariner) 1976, 60 HP (2 & 4-Stroke, Not Bigfoot or Sea Pro/Marathon) 1978 & Newer, 65 HP (Includes Model 650) 1972-1976, 70 HP (Includes Model 700) thru 1983, 80 HP (Mariner) 1977; 13 Tooth spline 3-1/4" Gearcase		RBX-114	17013300	N/A	N/A	C
40-60 HP Bigfoot, 40-140 HP (except 135 HP) V4 Gearcase 1978 & Newer; 15 tooth spline 4-1/4" Gearcase		RBX-102	17015300	RBX-102B	17015304	D
90HP, 115HP (Command Thrust) 2014 & Newer, 135 HP 1987 & Newer, 150-300 HP 1978 & Newer; 15 tooth spline 4-3/4" Gearcase		RBX-102	17015300	RBX-102B	17015304	E
Mercruiser Alpha One & Bravo One (less than 400HP); 15 tooth spline		RBX-102	17015300	RBX-102B	17015304	E
Models with 1 1/4" propshaft; 19 tooth spline (Rubber & SS Hub)		RBX-123	17016300	N/A	N/A	E+
225 EFI (4-Stroke) manufactured by Yamaha ; 15 tooth spline 4-3/4" Gearcase		RBX-124	17015300	RBX-124B	17015304	E

<b>Nissan / Tohatsu</b>		Hub Kit #	Hub #	Hub Kit #	Hub #	Prop Category
9.9 HP (2-Stroke) 1984 & Newer, 15 HP (2-Stroke) 1985 & Newer, 18 HP (2-Stroke) 1985 & Newer, 20 HP (4-Stroke) 2007 & Newer, 9.9 HP (4-Stroke) 00-03, 15 HP (4-Stroke) 2000 & Newer, 18 HP (4-Stroke) 01-08, 12 HP 85-88, MFS 9.9, 15, 18, 20 (4-Stroke); MSFMFS 9.9, 15, 18, 20; 2-1/2" Gearcase (14 Tooth Spline)		N/A	N/A	RBX-A50	N/A	A
MFS 25, 30 (4-Stroke), NSF 25, 30 (4-Stroke), 25 HP 86-01, 25 HP (4-Stroke) 02 & Newer, 30 HP 85-01, 30 HP (4-Stroke) 02 & Newer, 30HP TLDI 2016 & Newer; (10 Tooth Spline) 3" Gearcase		N/A	N/A	RBX-B50	N/A	B2
35 HP (35B only) Thru 1984, 40 HP 1984 & Newer, 50 HP (All except 50C) 1992 & Newer; 13 tooth spline 3-1/4" Gearcase		RBX-116	17013300	N/A	N/A	C
50 HP (50C only) 1987-91, 55 HP 1981-88, 60A 1986-99, 70A & 70B 1981-95; 13 tooth spline 3-1/4" Gearcase		RBX-112	17013300	N/A	N/A	C
60-140 HP (except 60A, 70A, & 70B) 1987 & Newer; MFS75A-115A 2020 & Newer; 15 tooth spline 4-1/4" Gearcase		RBX-109	17015300	RBX-109B	17015304	D
BFT 115-250 HP 2014 & Newer; 15 tooth spline 4-3/4" Gearcase		RBX-107	17015300	RBX-107B	17015304	E





RBX Box



RUBEX HUB KIT APPLICATION CHART	ALUMINUM HUB		BRONZE HUB		Prop Category
	Hub Kit #	Hub #	Hub Kit #	Hub #	
<b>Evinrude / Johnson / BRP</b>					
8 HP (4-Stroke) 1996-2005; 9.9, 15 HP (2-Stroke) 1974-2005; 9.9, 15 HP (4-Stroke) 1995-2001, 12HP 2012 & Newer; 2-1/2" Gearcase (13 Tooth Spline)	N/A	N/A	RBX-A20	N/A	A
9.9 - 15 HP (4-Stroke) Johnson 02-07 JAPAN ORIGIN SUZUKI 2-1/2" Gearcase (10 Tooth Spline)	N/A	N/A	RBX-A40	N/A	A
15 HP E-TEC H.O. 2011 & Newer, 20 HP 2 Cyl 84-97, 25 HP (Commercial) 93-05, 25 HP 2 & 3 Cyl 84 & Newer, 25 HP E-TEC 2009 & Newer, 30 HP 2 Cyl 84 & Newer, 30 HP E-TEC 2009 & Newer, 35 HP 2 Cyl 79-83, 35 HP 3 Cyl 97-01; (14 Tooth Spline) 3" Gearcase	N/A	N/A	RBX-B20	N/A	B1
Johnson 25-30 HP (4-Stroke) 04-07; JAPAN ORIGIN SUZUKI (10 Tooth Spline) 3" Gearcase	N/A	N/A	RBX-B40	N/A	B3
40 & 50 HP (4-Stroke) 1999-05; 13 tooth spline 3-1/4" Gearcase	RBX-115	17013300	N/A	N/A	C
40-75 HP (Small Gearcase) 1975-2005; 13 tooth spline 3-3/8" Gearcase	RBX-111	17023300	N/A	N/A	C
40-75 HP (Large Gearcase) 1968 & Newer, 85-140 HP 1969 & Newer; 13 tooth spline 4-1/4" Gearcase	RBX-106	17024300	RBX-106B	17024301	D
60 & 70 HP (4-Stroke) 1998 & Newer; 13 tooth spline 4-1/4" Gearcase	RBX-110	17024300	RBX-110B	17024301	D
90 & 115 HP (4-Stroke) 2002-07; 15 tooth spline 4-1/4" Gearcase	RBX-125	17015300	RBX-125B	17015304	D
140 HP (4-Stroke) 2002-07; 15 tooth spline 4-1/4" Gearcase	RBX-126	17015300	RBX-126B	17015304	D
90-300 HP 1991 & Newer; 15 tooth spline 4-3/4" Gearcase	RBX-100	17025300	RBX-100B	17025302	E
90-300 HP 1976-90; 15 tooth spline 4-3/4" Gearcase	RBX-101	17025300	RBX-101B	17025302	E
200 & 225 HP (4-Stroke) 2004-2005; 15 tooth spline 4-3/4" Gearcase	RBX-104	17015300	RBX-104B	17015304	E
150-300 HP G2 Engine 2014 & Newer; 15 tooth spline 4-3/4" Gearcase	RBX-151	17025301	RBX-151B	17025303	E

<b>Honda</b>					
BF 8 HP 00 & Newer, BF 15 HP 91 & Newer, BF 9.9 HP 88 & Newer, BF 20 HP 03 & Newer; 2-1/2" Gearcase (8 Tooth Spline)	N/A	N/A	RBX-A30	N/A	A
BF 25 HP 94 & Newer, BF 30 HP 95 & Newer; (10 Tooth Spline) 3" Gearcase	N/A	N/A	RBX-B50	N/A	B2
BF 35 & BF 45 1991-94, BF 40, 50, & 50A 1995 & Newer, BF 60 2010 & Newer; 13 Tooth Spline 3-1/4" Gearcase	RBX-113	17013300	N/A	N/A	C
BFP 60 2010 & Newer, BF 75 & BF 90 1999 & Newer, BF80 & BF100 2013 & Newer. BF 115 1998-10, BF 130 1998-04; 15 Tooth Spline 4-1/4" Gearcase	RBX-107	17015300	RBX-107B	17015304	D
BF 75-90 1995-98; 15 tooth spline 4-1/4" Gearcase	RBX-102	17015300	RBX-102B	17015304	D
BF 115D 2011 & Newer, BF 135-250 2002 & Newer; 15 Tooth Spline 4-3/4" Gearcase	RBX-107	17015300	RBX-107B	17015304	E

<b>Force</b>					
40 & 50 HP 1995-98, 70 HP 1991-95, 75 HP 1996-98; 13 tooth spline 3-1/4" Gearcase	RBX-114	17013300	N/A	N/A	C
75-150 HP (Thru Hub Exhaust) 1995-99, 85-150 HP (Dual Exhaust) 1988-94; 15 Tooth Spline 4-3/4" Gearcase	RBX-102	17015300	RBX-102B	17015304	D

RUBEX HUB KIT APPLICATION CHART	ALUMINUM HUB		BRONZE HUB		Prop Category
	Hub Kit #	Hub #	Hub Kit #	Hub #	
<b>Yamaha</b>					
T8, T9.9 All, F9.9 (4-Stroke) 00-07, F15 (4 Stroke) 98 & Newer, F20(4-Stroke) 07-17, 9.9 HP (2-Stroke) 84-09, 15 HP (2-Stroke) 84-09, F15 C 07 & Newer, 2-1/2" Gearcase (8 Tooth Spline)	N/A	N/A	RBX-A30	N/A	A
20 HP 96-97, F20 (4 Stroke) 18 & Newer , F25 (4 Stroke) 98-06; 10 & Newer, 25 HP 80 & Newer, 30 HP 1979-2002 (10 Tooth Spline) 3" Gearcase	N/A	N/A	RBX-B30	N/A	B2
T25 HP 2010 - 2018, F30 (4-Stroke) 2001-05, F40 (4-Stroke) 1999 & Newer, F50 (4-Stroke) 1995 & Newer, F60 (4-Stroke) 1999 & Newer, 40 HP & 50 HP (not T50) 1984 & Newer, 48 HP 1995-00, 55 HP 1976-95, 60 HP 1976-91 (not T60); 13 tooth spline 3-1/2" Gearcase	RBX-117	17013300	N/A	N/A	C
T50 1996 & Newer, T60 2003 & Newer, 60 HP (not F60) 1992-05, 70-100 HP (not F75B, F90B & F100B) 1984 & Newer; 15 tooth spline 4-1/4" Gearcase	RBX-208	17015302	RBX-208B	17015301	D
80-140 HP 1977-83; 15 tooth spline 4-1/4" Gearcase	RBX-102	17015300	RBX-102B	17015304	D
F75B & F90B & F100B / 115 HP & 130 HP 1984 & Newer, F115 (4-Stroke) 2000 & Newer; 15 tooth spline 4-1/4" Gearcase	RBX-203	17015302	RBX-203B	17015301	D
150-175 HP 1978-83; 15 tooth spline 4-3/4" Gearcase	RBX-102	17015300	RBX-102B	17015304	E
150-225 HP 1984 & Newer, 15 tooth spline	RBX-203	17015302	RBX-203B	17015301	E
250 HP 1984 & Newer, 15 tooth spline; 300 HP (4 Stroke V6 Engine) 2004-2007 & 2010 & Newer; Sterndrives 1989-1993, 15 tooth spline	N/A	N/A	RBX-203B	17015301	E
200 – 250 HP VMAX SHO V6	N/A	N/A	RBX-203X	17015301	E
300 HP (4-stroke V8 Engine), 350 HP (4-stroke V8 Engine); 17 tooth spline 5-1/4" Gearcase (Rubber & Bronze Hub)	N/A	N/A	RBX-127	17039300	E+

**You need a Hub Kit and a Prop for complete installation :**

- 1. Locate Horsepower/Model and Year.**
- 2. Read across to reference RUBEX™ Hub Kit/Propeller series.**
- 3. Select propeller diameter & pitch from corresponding propeller series.**

Flo-Torq is a registered trademark of the Brunswick Corporation.

Vortex is a registered trademark of Michigan Wheel Corporation.

OMC, Cobra, King Cobra, Cobra SX, Evinrude/Johnson/BRP are registered trademarks of the Bombardier Recreational Products Inc., Mercury, Mariner, Mercruiser, Typhoon, Quicksilver & Force are registered trademarks of the Brunswick Corporation. Volvo is a registered trademark of Volvo Penta Marine Products LP. Suzuki is a registered trademark of the Suzuki Motor Corp. Yamaha is a registered trademark of the Yamaha Corp. Honda is a registered trademark of the Honda Motor Co., Ltd. Tohatsu is a registered trademark of the Tohatsu Corp. Nissan is a registered trademark of the Nissan Jidosha Motor Corp.



RBX Box



<b>RUBEX HUB KIT APPLICATION CHART</b>	<b>ALUMINUM HUB</b>		<b>BRONZE HUB</b>		Prop Category
	Hub Kit #	Hub #	Hub Kit #	Hub #	
<b>OMC / Cobra Sterndrives</b>					
Model 400 Cobra 1978-91; 13 tooth spline 4-1/4" Gearcase	<b>RBX-106</b>	<b>17024300</b>	<b>RBX-106B</b>	<b>17024301</b>	<b>D</b>
Model 800/Cobra/King Cobra 1978-90; 15 tooth spline 4-3/4" Gearcase	<b>RBX-101</b>	<b>17025300</b>	<b>RBX-101B</b>	<b>17025302</b>	<b>E</b>
Model 800/Cobra/King Cobra 1991-94; 15 tooth spline 4-3/4" Gearcase	<b>RBX-100</b>	<b>17025300</b>	<b>RBX-100B</b>	<b>17025302</b>	<b>E</b>
Cobra SX 1994 & Newer; 19 tooth spline 4-3/4" Gearcase	<b>RBX-105</b>	<b>17075300</b>	<b>RBX-105B</b>	<b>17075301</b>	<b>E</b>

<b>Volvo</b>	Hub Kit #	Hub #	Hub Kit #	Hub #	Prop Category
SX Sterndrives 1994 & Newer; 19 tooth spline 4-3/4" Gearcase	<b>RBX-105</b>	<b>17075300</b>	<b>RBX-105B</b>	<b>17075301</b>	<b>E</b>

<b>Suzuki</b>	Hub Kit #	Hub #	Hub Kit #	Hub #	Prop Category
DF 8A (4-Stroke) 2011 & Newer, DF 9.9A/DF9.9B (4-Stroke) 2010 & Newer, DF 15 (4-Stroke) 96-2012, DT 9.9 83-87, DT 15 83-88, 9.9C and 9.9CN not applicable, DF 9.9 (4 Stroke) 96 & Newer, DT 15C 89-97, DF 15A; DF20A 2013 & Newer 2-1/2" Gearcase (10 Tooth Spline)	<b>N/A</b>	<b>N/A</b>	<b>RBX-A40</b>	<b>N/A</b>	<b>A</b>
DT 20 83-88, DF 25A 2014 & Newer, DT 25 & 25C 83-00, DF 25 (Includes V-Twin) 2000 & Newer, DF 25R 2010 & Newer, DT 30 & 30C 83-97, DF 30 00-07, DF 30A 2014 & Newer; (10 Tooth Spline) 3" Gearcase	<b>N/A</b>	<b>N/A</b>	<b>RBX-B40</b>	<b>N/A</b>	<b>B3</b>
DT 35C 1987-89, DT 40 1983-98, DF 40 & DF 50 (4-Stroke) 1999-10, DF 40A & DF 50A (4-Stroke) 2011 & Newer, DT 50 & 50M 1983-84, DT 55 1985-97, DT 60 1983-84, DF 60A (4-Stroke) 2010 & Newer, DT 65 1985-97; 13 tooth spline 3-1/4" Gearcase	<b>RBX-115</b>	<b>17013300</b>	<b>N/A</b>	<b>N/A</b>	<b>C</b>
DF 60 (4-Stroke) 1998-09, DF 70 (4-Stroke) 1998-08, DT 75-140 HP 1979-01; 13 tooth spline 4-1/4" Gearcase	<b>RBX-110</b>	<b>17024300</b>	<b>RBX-110B</b>	<b>17024301</b>	<b>D</b>
DF 70A & DF 80A & DF 90A (4-Stroke) 2009 & Newer; 15 tooth spline 4-1/4" Gearcase	<b>RBX-150</b>	<b>17015300</b>	<b>RBX-150B</b>	<b>17015304</b>	<b>D</b>
DF 90 2001-08, DF 100 2009 & Newer, DF 115 2001-12, (All 4-Stroke); 15 tooth spline 4-1/4" Gearcase	<b>RBX-125</b>	<b>17015300</b>	<b>RBX-125B</b>	<b>17015304</b>	<b>D</b>
DF 115A & 140A 2013 & Newer, DF 140 2002-12, (All 4-Stroke); 15 tooth spline 4-1/4" Gearcase	<b>RBX-126</b>	<b>17015300</b>	<b>RBX-126B</b>	<b>17015304</b>	<b>D</b>
DT 150-225 HP (2-Stroke) 1986 & Newer, DF 150-300 HP (4-Stroke); 15 tooth spline 4-3/4" Gearcase	<b>RBX-104</b>	<b>17015300</b>	<b>RBX-104B</b>	<b>17015304</b>	<b>E</b>

<b>OXE Diesel</b>	Hub Kit #	Hub #	Hub Kit #	Hub #	Prop Category
125 HP, 150 HP, 175 HP, 200 HP; 15 tooth spline	<b>RBX-102</b>	<b>17015300</b>	<b>RBX-102B</b>	<b>17015304</b>	<b>E</b>
300 HP; 17 tooth spline	<b>N/A</b>	<b>N/A</b>	<b>RBX-128</b>	<b>17039300</b>	<b>E+</b>

<b>COX Diesel</b>	Hub Kit #	Hub #	Hub Kit #	Hub #	Prop Category
300 HP; 19 tooth spline (Rubber & SS Hub)	<b>RBX-123</b>	<b>17016300</b>	<b>N/A</b>	<b>N/A</b>	<b>E+</b>

You need a Hub Kit and a Prop for complete installation :

1. Locate Horsepower/Model and Year.
2. Read across to reference RUBEX™ Hub Kit/Propeller series.
3. Select propeller diameter & pitch from corresponding propeller series.

Ho-Torg is a registered trademark of the Brunswick Corporation. Vortex is a registered trademark of Michigan Wheel Corporation.  
 OMC, Cobra, King Cobra, Cobra SX, Evinrude/Johnson/BRP are registered trademarks of the Bombardier Recreational Products Inc. Mercury, Mariner, Mercruiser, Typhoon, Quicksilver & Force are registered trademarks of the Brunswick Corporation.  
 Volvo is a registered trademark of Volvo Penta Marine Products LP. Suzuki is a registered trademark of the Suzuki Motor Corp. Yamaha is a registered trademark of the Yamaha Corp. Honda is a registered trademark of the Honda Motor Co., Ltd.  
 Tohatsu is a registered trademark of the Tohatsu Corp. Nissan is a registered trademark of the Nissan Jidosha Motor Corp.



# HOW TO CHOOSE A RUBEX™ HUB

**BRONZE**

**OR**

**ALUMINUM**



**Suggested for :**

- > **High Horsepower (115 & Up)**
- > **Extreme Use**
- > **Saltwater / Freshwater Use**
- > **Stainless Steel Propellers**

**Suggested for :**

- > **Low to High Horsepower**
- > **Regular Use**
- > **Freshwater & Occasional Saltwater Use**
- > **Aluminum & Stainless Steel Propellers**

The "B" found at the end of the RUBEX hub kit number denotes that the hub has a bronze core. RUBEX hub kits with a "B" will fit the same applications as its none "B" counterpart.



[www.rubexprops.com](http://www.rubexprops.com)